

KEDC

Kentucky Educational Development Corporation
2021-2022 Services



Your Trusted Partner in Education

Insulated Roofing IRC Contractors



Why Are Spray Foam Roofs the Best Choice?



No Leaks

One continuous, seamless, roof system



Saves You Money

SPF provides the highest R-value insulation, reducing your energy costs



Low Maintenance

Durable, and weather resistant: localized damage can be easily repaired



Long Lasting

Spray-foam polyurethane seals completely with no breaks in the membrane at penetrations and no seams that shrink or separate

Wayne Hampton

Regional Vice President of Sales

502-558-6271

Brent Williams

Architectural Director

502-548-6546

www.ircroof.com



Dear Partner in Education:

This year the KEDC family has grown! We now provide support and add value to over 70 member school districts throughout the Commonwealth. The last couple of years have been one for the history books and together we can succeed with a united spirit of cooperation and innovation to overcome any obstacle. KEDC is here for you and provides services and support in the areas of Leadership, Instruction, Technology, Special Education, Grants, Adult Education and so much more!

Always feel free to visit our website www.kedc.org or follow us on social media for the newest happenings. If you ever need anything we are just a phone call away!



Sincerely,

Mrs. Nancy L. Hutchinson

Chief Executive Officer, KEDC



*Stay Connected with KEDC on the web,
and on Facebook, Twitter, & YouTube.*

TABLE OF CONTENTS

KEDC 2019-20 Profile	6
Revenue Cycle	6
Board Services.....	7
Member Districts	8
Superintendents.....	8
KEDC Member Services.....	10
Instructional Support Services.....	10
CRRSA.....	14
ACE (Achievement in Career Engagement)	16
ASPIRE.....	20
Project CHARGE	21
Adult Education.....	26
Special Education	28
Technology.....	30
Marketing	32
KPC Member Services	22
Catalog-Retail Store Shelf	23
Nutrition Services.....	23
BG-1 Approved Construction Bids.....	23
Custodial Services.....	23
Facility Supplies & Rental Services.....	23
Health and Safety.....	23
HR Software.....	23
Technology.....	23
School Bus Parts & Accessories	23
Office & Classroom Supplies	23

**KEDC Ashland
Office & Conference Center**

904 Rose Road
Ashland, KY 41102
Phone: 606-928-0205
Fax: 606-928-3785

**KEDC Lexington
Office & Conference Center**

118 James Court, Suite 60
Lexington, KY 40505
Phone: 859-255-6411
Fax: 859-252-8187



www.kedc.org



www.facebook.com/kedc.org



@kedc1



live.kedc.org



KPC Preferred
Office/Classroom
SUPPLY
CONTRACTS



Utilize one of KPC's Three
Preferred Office/Classroom Supply Contracts and
Get FREE Shipping on Your Purchase.



www.KPC4me.com
904 Rose Rd. • Ashland, KY 41102 • 800.737.0204

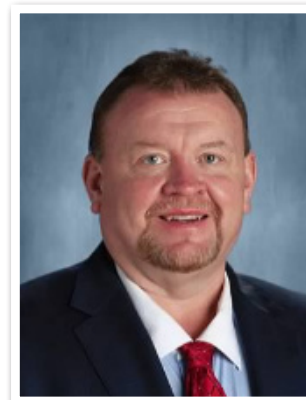
KEDC PROFILE

The Kentucky Educational Development Corporation, or KEDC, is Kentucky's oldest and largest educational cooperative. Founded in 1965, KEDC has grown to include over 70 school districts, colleges and universities in its membership. KEDC exists to provide educational support services for its members. KEDC is "Your Trusted Partner in Education."

We offer quality assistance to Kentucky school districts.

Services include:

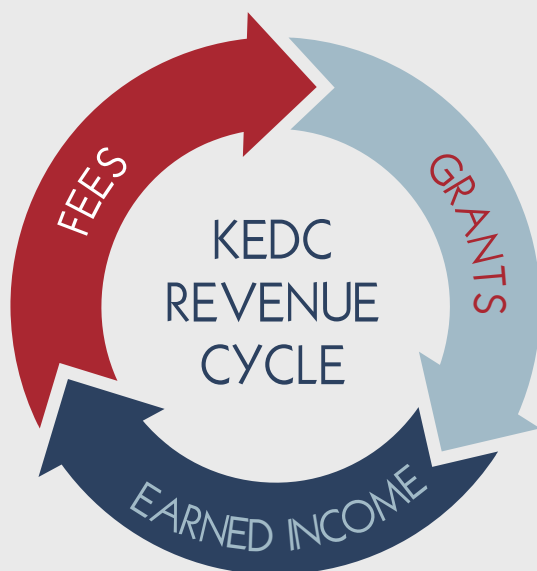
- ◆ Technology/Engineering Services
- ◆ Special Education Services
- ◆ Full Collective Bidding Support
- ◆ Leadership Development
- ◆ Professional Development Opportunities
- ◆ Adult Education Services
- ◆ Grants and Support
- ◆ School Safety Engineering
- ◆ Finance Services
- ◆ CEO Rank Change Option
- ◆ Equity Initiative
- ◆ Center for Disease Control (CDC) Initiative
- ◆ Coronavirus Response and Relief Supplemental Appropriations Act (CRRSA) Response Team



Mr. Sanford Holbrook
KEDC Board Chair
Superintendent
Robertson County Schools



Mr. Patrick Richardson
KEDC Board Chair-Elect
Superintendent
Pulaski County Schools



KEDC is proud of the way our revenue supports school districts.



MEMBER BENEFITS FOR THE KEDC BOARD OF DIRECTORS:

- ◆ Networking and Professional Development Opportunities
- ◆ Advice & Legal Services – Tim Crawford, KEDC Attorney
- ◆ EILA Credit for Participation in Board of Director’s Meetings
- ◆ Facility Consultation – Mark Ryles, KEDC Facilities Consultant
- ◆ Full Access to Instructional Support Services
- ◆ KPC Membership with Full Access to Collective Bidding, Purchasing, and Technology Services
- ◆ Minority Recruitment Advertising
- ◆ Salary Surveys and Ranking Reports
- ◆ Technology Engineering Services and Support
- ◆ Leadership Development and Support
- ◆ Financial Consulting Services – MUNIS, Year End Close, Budget
- ◆ Communication and Marketing Blitzes

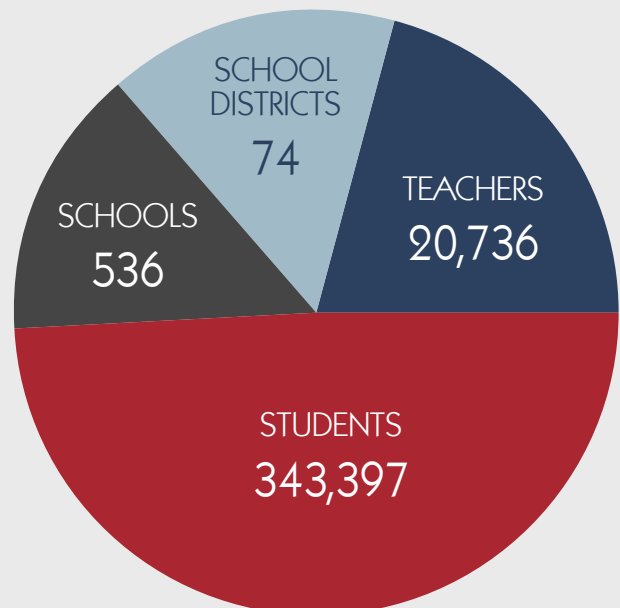
KEDC Proudly Serves:

74 DISTRICTS

536 SCHOOLS

20,736 TEACHERS

343,397 STUDENTS





Denise Yonts
Letcher County



Jamie Weddington
Lewis County



Michael Rowe
Lincoln County



Paul Mullins
Logan County



David Gilliam
Madison County



Scott Helton
Magoffin County



Larry James
Martin County



Rick Ross
Mason County



Corey Keith
McCreary County



Tim Spencer
Menifee County



Jason Booher
Mercer County



Waylon Allen
Middlesboro Independent



Matthew Thompson
Montgomery County



Ralph Hamilton
Morgan County



Tony Watts
Newport Independent



Doug Bechanan
Nicholas County



Tim Bobrowski
Owsley County



David Gibson
Paintsville Independent



Stephen McCaulley
Paris Independent



Jonathan Jett
Perry County



Reed Adkins
Pike County



David Trimble
Pikeville Independent



Russell Thompson
Pineville Independent



Anthony Orr
Powell County



Patrick Richardson
Pulaski County



Larry Coldiron
Raceland Independent



Sanford Holbrook
Robertson County



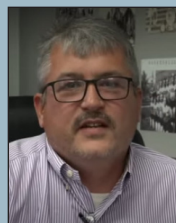
Carrie Ballinger
Rockcastle County



John Maxey
Rowan County



Sean Horne
Russell Independent



Larry Begley
Russellville Independent



Billy Parker
Scott County



Kyle Lively
Somerset Independent



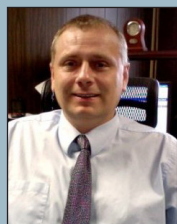
Wayne Roberts
Wayne County



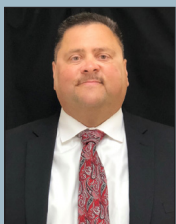
John Siler
Whitley County



Tim Melton
Williamsburg Independent



Kenny Bell
Wolfe County



Danny Adkins
Woodford County



KEDC INSTRUCTIONAL SUPPORT SERVICES

The KEDC Instructional Support Team is guided by the mission and vision adopted by our superintendent Board of Directors in service to our members. The IS team is constantly looking for ways to support, enhance and elevate all aspects of teaching and learning in KEDC districts and schools.



PROFESSIONAL DEVELOPMENT TRAININGS AND EVENTS

Throughout the school year and during the summer, KEDC schedules trainings and professional development events based on input from our member districts. For the 21-22 school year KEDC is planning to offer a combination of virtual and in-person professional learning as recommendations allow. Please check our website www.kedc.org and follow us on social media FB-@KEDC.ORG/ Twitter-@KEDC1/ Instagram -@kedc_org for the most up to date information about all of our professional learning opportunities .

School Culture Assessments KEDC staff has created a process by which schools can assess their school culture as it prepares students to be ready for college and careers. Using seven domains, teams can be contracted to perform external, third party culture assessments for all levels and configuration of schools.



KEDC Digital Professional Learning

KEDC Instructional Services team online modules can be accessed from www.kedc.org and include viewable previously recorded sessions with the ability to earn a PD certificate. Sessions range from *Google Classroom* tools to *Globalizing your Curriculum*.



Trish Carroll, Chief Operating Officer
trish.carroll@kedc.org

Latishia Sparks, Program and Partnerships
latishia.sparks@kedc.org

Charles Rutledge
Education Consultant
Charles.rutledge@kedc.org

KEDC INSTRUCTIONAL ROLE GROUP CADRES

KEDC Role Group cadres are chaired by educational leaders from KEDC member districts and designed for educators serving in the same or similar roles to have space and time to discuss the issues, problems of practice and details specific to their work. For 21-22 school year, most cadre meetings are being scheduled as in person events at the Ashland and Lexington locations (as safety protocols allow) but some meetings will be virtual to better fit the needs of our districts and presenters.

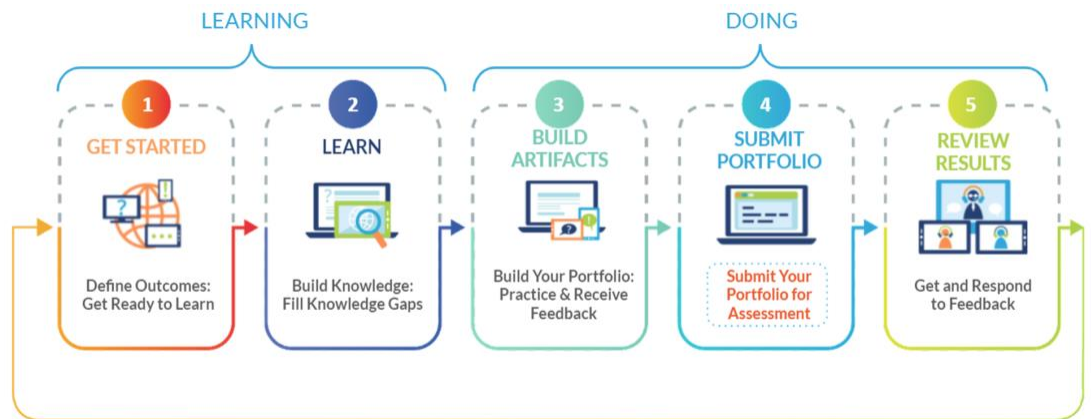
 <p>Instructional Role Group Cadres</p> <p>2021-2022 Dates</p> <p><i>cadre chairs</i></p>	<p>Federal Programs/ Title 1 Coordinator Cadre</p> <p>KEDC - Lexington 9:30am- 12:30pm</p> <p>September 14, 2021 November 4, 2021 January 7, 2022 March 3 , 2022</p> <p>Holly Kimble- Mason</p>	<p>District Pupil Personnel Cadre</p> <p>KEDC-Lexington 9:30am-12:30pm</p> <p>October 26, 2021 December 2, 2021 March 8, 2022</p> <p>Gina Sears-Knox Meredith Robinson-Powell</p>	<p>Professional Development Coordinator & Instructional Supervisor Cadre</p> <p>KEDC - Lexington 9:30am - 12:30pm</p> <p>September 10, 2021 November 4th, 2021 December 3, 2021 February 4, 2022 *Feb 18-snow date June 3, 2022</p> <p>Amy Polston-Pulaski Ashley Hill -Corbin</p>
<p>DAC Cadre East KY-Ashland</p> <p>KEDC-Ashland 9:30am – 12:30pm</p> <p>September 21, 2021 November 16, 2021 *March 22, 2022 June 7, 2022</p> <p>Heather Aldrich-Russell Ind. May Hall-Lawrence</p>	<p>DAC Cadre Central KY-LEX</p> <p>KEDC-Lexington 9:30am - 12:30pm</p> <p>September 24, 2021 November 19, 2021 *March 22, 2022 June 17, 2022</p> <p>Jeff Stamper-Wolfe Laura Perry-Garrard</p>	<p>Counselor Cadre Central KY-LEX</p> <p>KEDC-Lexington 9:30am – 12:30pm</p> <p>October 5, 2021 November 12, 2021 January 11, 2022 *February 8, 2022 June 10, 2021</p> <p>Lynette Ballard-Estill</p>	<p>Counselor Cadre- East KY-Ashland</p> <p>KEDC-Ashland 9:30am – 12:30pm</p> <p>October 5, 2021 November 12, 2021 January 11, 2022 *February 8, 2022 June 10, 2021</p> <p>Kelly Fox-Boyd Jalina Wheeler-Russell Ind.</p>
<p>Gifted & Talented Cadre</p> <p>KEDC-Ashland 1:00pm-3:00pm</p> <p>September 30, 2021 December 1, 2021 March 10 2021</p> <p>Susan Williams-Russell Ind. Kristen Waller-Raceland Ind.</p>	<p>Gifted & Talented Cadre</p> <p>KEDC-Lexington 1:00pm-3:00pm</p> <p>September 28, 2021 December 2, 2021 March 9, 2022</p> <p>Michelle Cason-Woodford</p>	<p>STE(A) M educator Cadre</p> <p>KEDC-Lexington 9:30am - 3:00pm</p> <p>September 27, 2021 November 29, 2021 February 14, 2022 June 13, 2022</p> <p>Amanda Cole-Russell Ind.</p>	<p>Principal Cadre 10am-11am</p> <p>September 8 , 2021 October 13, 2021 November 10, 2021 January 12, 2022 February 9, 2022 March 9, 2022</p> <p><i>All meetings are virtual via ZOOM</i></p>

For more information about these cadres visit www.kedc.org or
email latishia.sparks@kedc.org

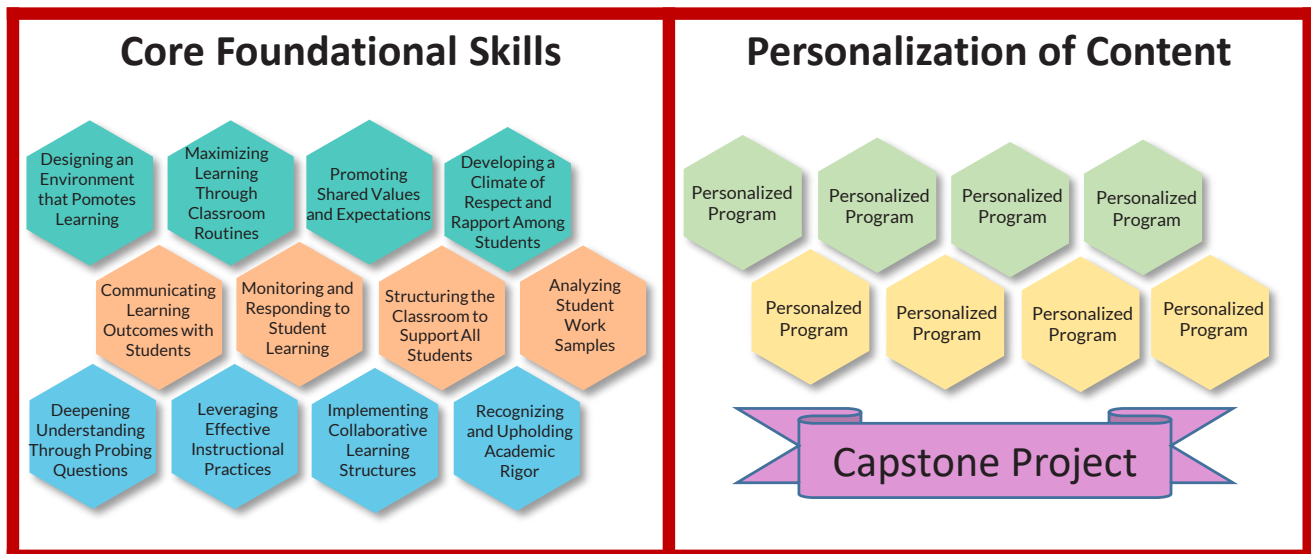
CEO Rank Change Option

KEDC is excited to share that we have enrolled over 200 participants in our CEO program and plan on adding to this total the upcoming year. KEDC has partnered with Bloomboard Inc to develop a cost-effective micro-credential based learning experience that fosters teacher growth. KEDC will be adding new participants to the program in January and July. Please share this opportunity with your teachers. If your district is interested in a more personalized approach please contact KEDC.

What is a micro-credential?



KEDC's Foundations of Teaching and Learning Program will require participants to display competencies in the 10 KY Teacher Performance Standards through a collection of evidence such as lessons, assessments, student work, teacher videos, etc. Participants will begin by completing 12 Core Foundational Skill micro-credentials targeting Classroom Management, Assessment Literacy, and Instructional Strategies. Participants will then be able to customize their plan by selecting from a wide variety of personalized micro-credential programs. Participants will complete their program through a culminating activity, the Capstone Project.



Teacher supports will include mentors, Bloomboard coaches, online community and program supervisors.

Latishia.Sparks@kedc.org Charles.Rutledge@kedc.org Trish.Carroll@kedc.org

KEDC Instruction and Leadership

Dr. Evans, Mr. Dotson and Mr. Trimble, all former superintendents, work in different facets and utilize multiple meeting venues to communicate and meet regularly with KEDC member district role groups (face-to-face, virtual, phone conference). Each supports different projects and goals, as listed below - these lists are not all inclusive.



Jim Evans, Ed.D
Instruction/Leadership Consultant
jim.evans@kcdc.org 859-475-2740

- Continuous Improvement Models
- Process Improvement Performance
 - Operational and Instructional
- Leadership Development
 - Administrators or Teacher Leaders
- Partnerships
 - State, Local and National
- Instructional Best Practices
- Strategic Planning
- Professional Learning Communities
 - District and School Level
- Personalized Professional Learning
- Administrator Cadre
- Communication Planning
- KEDC Point of Contact Lead
- New Superintendent Support
- Career & Tech Ed Cadre
- Grant Pursuit and Management
- Project Opportunities
- 30.60.90 Day Planning
- Systems Thinking
- Turnaround Models

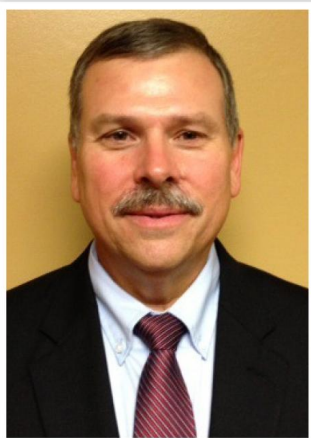
Andy Dotson
Instruction/Leadership Consultant
andy.dotson@kcdc.org 859-298-4976

- Communication Practices Between all School and District Stakeholders, including Superintendent and School Board
- Guidance on Instructional Practices
- Support KEDC Initiatives/Instructional Options Available
- Principal Cadre; work with regional administrators
- Liaison Between Superintendents and KEDC Staff to Connect and Support Services Needed
- Equity and Education



Steve Trimble
Leadership Consultant
steve.trimble@kcdc.org 606-792-8327

- Facilitates Regional Superintendent Luncheons/Virtual Meetings
- Monitors Messages from KDE and Other Professional Organizational Websites to Assist in Facilitating Superintendent Discussions
- Attends KEDC Board Meetings/Networks with Superintendents
- Attends KEDC/KPC Conference Booths to Share Available Services With Key Personnel





Collaborative Response to Reimagine Schools for All

In response to the effects on public education caused by the COVID-19 pandemic, Commissioner of Education, Dr. Jason Glass, charged the eight education cooperatives across the Commonwealth to develop teams funded by the **Coronavirus Response and Relief Supplemental Appropriations Act**. These teams were assembled to provide high-quality training and support to school districts at a time when students need it most.

We are committed to helping schools in our region emerge from the pandemic stronger than ever before! The CRRSA Team is focused on impacting **academic achievement, social-emotional development, and mental health** in a powerful, positive way. The team will provide research, training, consultation, guidance and other resources to district leaders and school stakeholders.



- New Teacher Club
- ELA & Math Cohorts
- Staff Wellness and SEL
- Emotional Poverty
- Youth Mental Health First Aid
- Differentiation
- Instructional Coaching
- Data Analysis
- PLC Protocols
- Social Emotional Learning
- PBIS



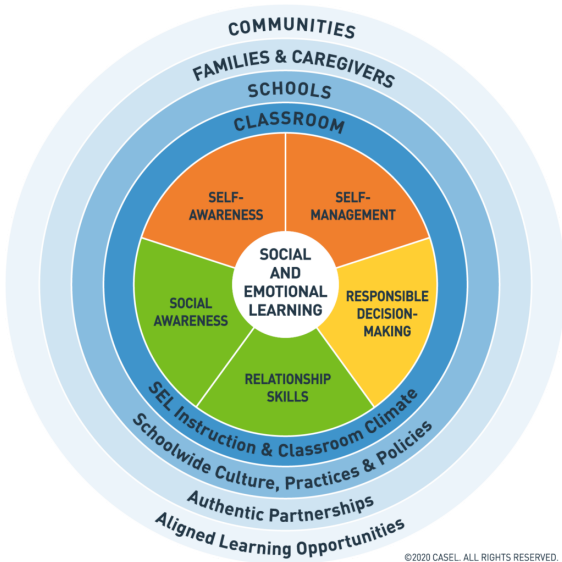
- Instructional Technology
- Growth Mindset
- Customer Service
- School Culture & Climate
- Cooperative Learning / Instructional Strategies
- MTSS
- Behavior & Classroom Management
- **Personalized PD based on teacher/school/district needs**

Contact us for training, coaching, consultation, and support!

We look forward to responding to your needs and helping meet your goals for student success!

 CRRSA@KEDC.ORG

  @KEDCCRRSA



The CRRSA Team's collaborative efforts with districts will foster an environment where students in all schools are challenged and thriving in their academic achievements and social-emotional well-being.

We will employ strategic processes to build capacity within districts and promote effective implementation. It is our goal to equip school staff with the skills to impact students and create systems that ensure sustainability for years to come.

★ KEDC CRRSA Districts ★

- Ashland Independent
- Augusta Independent
- Bath County
- Boyd County
- Carter County
- Elliott County
- Fairview Independent
- Fleming County
- Greenup County
- Johnson County
- Lawrence County
- Lewis County
- Martin County
- Mason County
- Menifee County
- Morgan County
- Paintsville Independent
- Raceland Independent
- Robertson County
- Rowan County
- Russell Independent

**C
R
R
S
A

A
R
E
A
S

O
F

F
O
C
U
S**

- Curriculum & Pacing Adjustments
- Effective Spiral Review
- Extra Time in Reading & Math
- Efficiency & Data-Driven Decision Making
- Optimizing Teacher-Student Relationships
- Professional Networking



Achievement in Career Engagement (ACE):

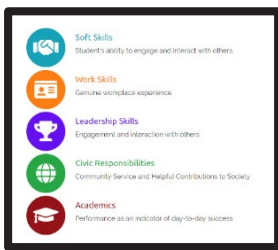
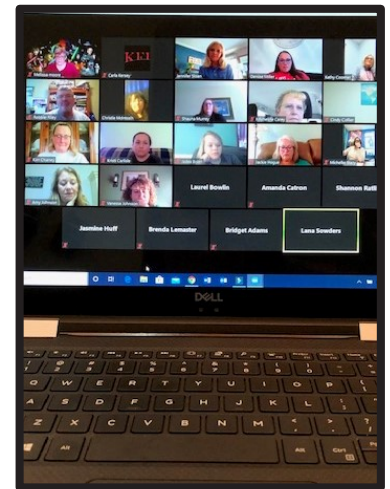
A Look at the 2020 -2021 Year

Achievement in Career Engagement (ACE) is a PROCESS of developing work-based learning skills through an Endorsement Program, based on levels of successful accomplishments, personalized by students and endorsed through KEDC. Students are confirmed Transition Ready in Careers in Academics.



Well Rounded Student

ACE is designed to give students a digital and social profile page that will allow them to develop well-rounded characteristics and show future employers their capabilities in the work-force.



FIVE CORE BADGES

ACE makes available Five Core Badges to assist students as they demonstrate academic and career readiness aligned with their Individual Learning Plan (ILP) throughout their high school years. Within ACE, these personalized experiences lead into work-based components and badges.

The KEDC ACE Development Team, led by Carla Kersey and Jennie Sloan, is proud to announce and welcome eight NEW ACE districts. WE will begin CORE 5 Training sessions July 2021. These training sessions are scheduled throughout the 2021-2022 school year with offering dates at the Lexington and Ashland offices. March 5, 2020 was the last IN-Person ACE Phase Training in Ashland. Zoom Meetings took over during the COVID Shutdown. The KEDC ACE Team is so excited to get back to In-Person trainings!

ACE and Virtual Learning for ALL

When the decision was made to close all schools in Kentucky, our KEDC ACE districts were ready for NTI days with lessons and assignments for students and their ACE profile pages. It was quite successful as these students needed little to no instructions because they were familiar with ACE and had been working on their ILP Profiles for several months. It was a seamless transition for many schools/districts and ACE provided a way for teachers, counselors, students, and parents to communicate as students developed their ACE Profiles.

The KEDC ACE TEAM continued to communicate with and train teachers and counselors through Zoom Meetings. We offered ACE and NAVIGATOR Refresher Walk-Throughs which included strategies for Virtual Learning. We also continued to train all new teachers and counselors through scheduled Zoom Meetings.



**"As a father, this tool has played a valuable role in showcasing my son's accomplishments in helping him select a career pathway in welding. I highly recommend it."
-Robbie L. Fletcher, EdD Superintendent
Lawrence County Schools**



**"I can attest that this has worked great in our school district. It is very relevant for the students. Our students see it as useful and meaningful and it helps fulfill required ILP mandates"
-Superintendent Kenny Bell
Wolfe County Schools**



KEDC Grants Team- Lexington Office
Back Row (L-R): Gaby Flowers, Wendy King, Dr. Jim Evans, Carla Kersey
Front Row (L-R): Jennie Sloan, Kay Hedrick,
Contact: first.last@kedc.org
Phone: 859-255-6411



What do KPC Guaranteed Energy Savings Contracts provide?

- Time savings with the BG-1 process
- Defined scope before contract
- Detailed engineering design
- A Design Build method that ensures materials and systems that meet your energy goals
- Training for staff and student programs
- A KPC consultant to provide support for project methodology on behalf of the owner
- Open book pricing that facilitates owner input regarding energy goals, and selection of prime contractors and materials
- Vendors that provide ongoing support and commissioning for successful project outcomes, maintenance, and operations



For more information, contact
info@kpc4me.com



Michelle Jorgenson • 614.561.5770 • mjorgenson@ameresco.com



Tim Hockensmith • 502.249.2023 • thockensmith@cmta.com



Justin Ost • 502.888.4398 • just@energyoptusa.com



David Dowdell • 502.264.2017 • ddowdell@performanceservices.com



KEDC FINANCIAL SERVICES

KEDC Finance Consultant services are available to all member districts. Any district staff with finance questions can contact **Sheila Miller**, our KEDC Finance Consultant.

Complimentary meetings and trainings for KEDC members include bi-annual School Bookkeeper Summits as well as Finance Officer and HR/Payroll Cadre Meetings. A new complimentary training for district purchasing/accounts payable staff will be added in FY2022. Other trainings that can be provided by the Finance Consultant include Accounting Procedures for Kentucky School Activity Funds (Redbook), New Finance Officer, Munis 101 and Fiscal Year End Processing.

**A quick financial consultation is a benefit of KEDC membership. Costs for assistance with more involved issues will be determined according to a fee schedule which is available upon request.*

MS. MILLER CAN HELP YOU WITH:

- ◆ General Munis Support
- ◆ Using Munis Cubes
- ◆ Chart of Accounts (COA) Alignment
- ◆ Budget Assistance – Draft, Tentative and Working Budget
- ◆ Month End Processing and Bank Reconciliation
- ◆ Reconciliations – Purchase Order, Accounts Payable, Fixed Assets Fund 2 (Special Revenue) and Fund 360 (Construction Fund)
- ◆ Reconciliation
- ◆ Provide Assistance for Year End Preparation, Processing and Creation of AFR
- ◆ On Behalf Payments Calculation
- ◆ SBDM Allocations and Staffing Policies
- ◆ Financial Trend Analysis
- ◆ Assistance Understanding Munis Reports
- ◆ Assistance with Capital Funds Requests
- ◆ Personnel Report Assistance – PSD and CSD
- ◆ Assistance with Kentucky Employee Benefits Program (Processing insurance import files)
- ◆ Setting Up Activity Funds in Munis
- ◆ Assistance with Accounting Procedures for Kentucky School Activity Funds (Redbook) – School Bookkeepers, Principals and Booster Organizations





GET THE MOST OUT OF SOCIAL STUDIES TEACHING AND STUDENT LEARNING

AMERICAN SUCCESS THROUGH PURPOSEFUL INSTRUCTION AND RIGOROUS EDUCATION

This program champions teachers who teach students who ASPIRE to be connected citizens. To accomplish this, ASPIRE offers teachers an opportunity to enhance History and Civics education by working directly with a cadre of 75+ other educators, historians, and master teachers. This cadre serve teachers of 6-12 grades in KEDC districts.

Cadre members participate in Presidential Academies which offer over 150+ hours of professional learning throughout the course of a school year and over the summer conducted by experts from the National Council of History Education (NCHE), regional history professors, master educators, and representatives from student civic engagement providers at both the local and national levels. Additionally, teachers are eligible to participate in Experiential Field Learning Teacher Institutes each summer in historical locations relevant to American History and its instruction. In Summer 2022, teachers will have the opportunity to join our Teacher Institute in the US's south to experience first-hand instruction that will further develop student educational materials and knowledge on topics related to Civil Rights.

Over 10,000 students in 34 school districts are impacted by these teachers. Congressional Academies, one-week summer programs focused on instruction and engagement in the legislative process, reach over 300 students of cadre members each year along with an immersive experience in Washington D.C. for 50 students each summer. Students also participate in a wide variety of civically-oriented programs and activities such as KYA, KUNA, National History Day, The Henry Clay Statesman Program, History Bee, Capstone Projects, and much more.

YEAR THREE OVERVIEW

This five-year Department of Education AHCA grant, has completed its third year in 2020 and 2021. Cadre members completed cumulatively 6, 830 hours of professional learning from NCHE, historians, and master teachers via in person cadre meetings and virtual academies. Fifty cadre teachers completed Experiential Immersion Teacher Academies in Philadelphia, Gettysburg and Chicago during the summer of 2021

Teachers shared lesson plans through a submission process that incorporated newly acquired instructional strategies and content learned in the year's Presidential Academies.

Teachers and students also completed pre- and post-assessments and surveys that indicated the tenants of the grant have been successfully implemented.

Over 400 ASPIRE students participated in week-long Congressional Academies and/or The Washington Institute for Leading through Learning (WILL) representing 12 participating school districts.



<http://www.aspire-ky.org/>
OR

<http://history.kedc.org/>

click me



Contact
kay.hedrick@kedc.org
to learn more.



@ASPIREKY
#KEDC
@KEDC1



Project CHARGE

School Districts and Teacher Leaders across Kentucky are preparing for another year to LEAD the CHARGE into next level evidence-based instructional practices and professional development activities with KEDC's Project Civics History through Advanced Research and Geography Education (C.H.A.R.G.E.)



Project CHARGE will offer Teacher Leader workshops (Cadres) for new and veteran teachers [Kindergarten through Eighth Grade] to strengthen their knowledge of American History, Civics, Government and Geography. During these Cadres teachers will gain valuable instructional and engagement strategies designed with the aim of improving overall quality of teaching and learning.

Teacher Leaders who are selected to participate in CHARGE will receive countless educational opportunities to gain multiple digital experiences for themselves as well as their student learners through various learning initiatives including:

- Google Educator Certification
- TCi History Alive Training & Materials
- Document Based Questions Training & Materials (DBQ)
- We the People Training & Materials
- Digital Citizenship Training
- Countless MORE Opportunities!



If you are interested in learning more about our PROJECT CHARGE Grant please visit our website www.kycharge.com or call our KEDC offices.

For more information contact:
Wendy.King@kcdc.org



@KyCharge @KEDC1 @KedcGrants

#KEDC #KyCharge
#LeadtheCHARGE

An Investment in Your Community



KPC SERVICES

KPC represents the purchasing power of over 800 members across 14 states and the District of Columbia. All non-profit and government entities are eligible to participate in KPC for FREE, which means they can receive the same discounted prices as schools across the Commonwealth. This includes religious groups, state and local government agencies, libraries, and many others. Our focus is to support members, vendors and ultimately the students we serve.

- ◆ KPC membership is FREE and open to anyone.
- ◆ Operating under Model Procurement, KPC solicits bids for goods and services that provide the best value for our members.
- ◆ KEDC serves as fiscal agent for KPC.
- ◆ KPC's buying power is an incentive for vendors to offer lower prices and greater discounts
- ◆ KPC provides FREE confidential cost comparisons and quotes from multiple vendors.

KPC SERVICES
CONTACT INFORMATION:

 info@kpc4me.com

 [@KPC4me](https://twitter.com/KPC4me)

 www.facebook.com/KPC4me

 www.kpc4me.com

SHOP KPC MARKETPLACE

- ◆ **Shop with Confidence – All Vendors Have a Current Awarded Contract**
- ◆ **Competitively Priced with KPC Bid Discount Applied**
- ◆ **Discounts Available for Bulk Orders**
- ◆ **Easy Quote Requests**



KPC AWARDED CONTRACTS

CATALOG - RETAIL STORE SHELF - Competitively procured local, regional, and national contracts for the goods and services you use every day. For a complete list of current contract holders visit us at www.kpc4me.com.

NUTRITION SERVICES - Members are eligible to take advantage of the following contracts:

- ◆ Prime Vendor Grocery Contracts
- ◆ Fresh Bakery and Dairy Contracts
- ◆ Food Service Menu & Software Contracts
- ◆ Compliance with all requirements (KDE & USDA)
- ◆ Streamlined item list
- ◆ Trainings and consulting services including monthly Nutrition Director Cadres.

BG-1 APPROVED CONSTRUCTION CONTRACTS -

For more information, contact Mark Ryles at mryles@ovec.org or Sam Atkins at sam.atkins@kedc.org

- ◆ Guaranteed Energy Savings Contracts
- ◆ Modified Bitumen Roofing
- ◆ Spray Urethane Roofing
- ◆ Telescoping Stands (Interior Bleachers)
- ◆ Roof Systems and Services

CUSTODIAL SERVICES

KPC Contract offers the following:

- ◆ Comprehensive Facility Management Services
- ◆ Facilities Operations & Maintenance
- ◆ Grounds Management

FACILITY SUPPLIES & RENTAL SERVICES

KPC Contracts offer the following:

- ◆ Garment Rentals
- ◆ Facility Equipment, Supplies, and Services
- ◆ Deep Cleaning Services

GIS MAPPING

- ◆ Campus Mapping
- ◆ Building Safety and Security

HEALTH AND SAFETY

- ◆ Cloth Face Mask Contracts
- ◆ Disinfection as a Service

HR SOFTWARE

KPC Contract offers the following:

- ◆ Comprehensive Solution for Applicant Tracking
- ◆ ACA Reporting and Tracking
- ◆ Seamless Data Portal
- ◆ Aesop BDIA (Munis Integration)

TECHNOLOGY

KPC Contract offers the following:

- ◆ Full Selection for Technology Needs
- ◆ Meets Requirements for eRate Program

SCHOOL BUS PARTS & ACCESSORIES

KPC Contract offers the following:

- ◆ Repair Parts & Accessories for Majority of Bus Manufacturers

OFFICE & CLASSROOM SUPPLIES

KPC Contract offers the following:

- ◆ Office Supplies
- ◆ Copy Paper



Keep your school clean, stocked and prepared

UNIFORM RENTAL	 WORKWEAR GARMENTS	 WOMEN'S GARMENTS	 Rental Workwear Only from CINTAS	 Chef Works®	 THE NORTH FACE
FACILITY SERVICES	 MICROFIBER TOWELS	 MOP SERVICE	 MAT SERVICE	 CLEANING CHEMICALS	 RESTROOM SUPPLIES
FIRST AID & SAFETY	 FIRST AID CABINETS	 SAFETY SUPPLIES & PPE	 AED PRODUCTS AND SERVICES	 SAFETY TRAINING	
FIRE PROTECTION*	 FIRE EXTINGUISHERS	 FIRE ALARM	 FIRE SPRINKLER	 EXIT AND EMERGENCY LIGHTING	 FIRE ALARM MONITORING

LEARN MORE

Contact TJ Howe at **865.310.2512** or **HoweT@cintas.com**.

Contract: 0100724-RFP-FSRS.2019

*Services offered may vary depending on service location. Services provided are limited to those explicitly contracted for by customer.



Let's Start This Year Off Right!

Our Promise to YOU!

At PrintUSA, we pride ourselves on our commitment to building better communities. That's why we can promise to work with you and your school's budget to ensure every student has the best year yet.

ASK US
about **FREE**
2'x6'
vinyl banners

\$69 value
on your next
new \$100+ order!

Limit 1 per Customer

Digital & Offset Printing, Emergency Flip Charts, Discipline Code Books, Design, Bindery, Posters, Stickers & Labels, Notepads, Promotional Items, Yard Signs, Vinyl Banners, Magnets, and much more!

1019 W Main St | Morehead KY 40351 • 606-784-2858 • Sales@PrintUSA.com • www.PrintUSA.com



AN EASIER & BETTER WAY TO PROCURE ROOFING AND WATERPROOFING PROJECTS

Garland Corporation Roof Systems and Services are available through KPC using the following highly qualified contractors: **ABR Roofing** (Lexington), **Bri-Den Roofing** (Ashland), **Escola Roofing** (Nashville), **Imbus Roofing** (Newport), **Kramer Roofing** (Cincinnati), **Preferred Roofing** (Owensboro), **Swift Roofing** (Elizabethtown, Murray), and **Tri State Roofing** (Lexington). The KPC Roof Systems and Services contract provides streamlined solutions at best prices for new construction, renovation and replacement, and roof maintenance and repair. Expertise is available via the Garland Corporation to meet all your roofing needs.

CONTRACT PRECOMPETED BY KPC

KPC professionals have completed the procurement process on your behalf, allowing you to access Garland's products and services with no additional solicitation needed. Procurement was based on Best Value proposition per KRS 45A Model Procurement, using scored performance metrics to ensure the highest level of contractor expertise and to lower owner risk.

BEST AVAILABLE PRICING

The KPC contract provides you with Garland's best material pricing. Site-specific pricing for installation is also provided, guaranteeing you receive the most competitive price for installation on your project.

ALL-INCLUSIVE WARRANTY

Garland representatives are on-site frequently to monitor installation, ensuring proper performance of your new asset. At project completion, Garland issues a comprehensive warranty covering all labor and materials, providing the public agency with unparalleled coverage.

COMPREHENSIVE OFFERING

The KPC Roofing and Service Contract with Garland provides a complete delivery of multiple types of roof systems and services, including field evaluations, core samples, scans, structural analysis, solution development and can include design services. Multiple roof systems are available for installation, including metal standing seam, modified bitumen, single-ply and maintenance coating systems. The program also includes provisions for repairs and maintenance of existing systems. The technical specifications are built around Garland roofing systems as the basis of design.

KPC is a division of Kentucky Educational Development Corporation. All trademarks and registered trademarks appearing in this document are the property of The Garland Company, Inc. unless specifically noted otherwise.
© 2021 Garland Industries, Inc.

For more information, contact:
Mark Ryles
KPC
859-227-4720
Rick Sunderman
The Garland Company
513-314-3283



CREDENTIALS ► COLLEGE ► CAREER
A Proud Partner of the American Job Center Network

KEDC SKILLS U AND GED TEST CENTERS

Boyd County
606.326.2457

Boyle County
606.922.6819

Carter County
606.474.9375

Elliott County
606.738.5733

Garrard County
859.792.8666

Greenup County
606.473.1091

Lawrence County
606.638.0601

Lincoln County
606.365.9665

Martin County
606.298.0207

Menifee County
606.768.9741

Mercer County
859.605.2211

MEET OUR STAFF!



KEDC SKILLS U CONTACT INFORMATION:

Contessa Love, Director

Tessa.Love@kedc.org | Mobile: 606.465.6694

Phone: 606.928.0205 | Fax: 606.929.2115

www.kedc.org/Instruction/AdultEducation

Want to stand out?



We offer **FREE** services to help you:

- Earn a GED® diploma
- Prepare for college/training
- Earn job-related certifications
- Increase employability skills
- And much more!

Contact us today to find out more!

www.kyskillsu.ky.gov

GED+PLUS **KENTUCKY SKILLS**
ACCELERATE YOUR PATH TO A CAREER

CREDENTIALS ► COLLEGE ► CAREER
A Proud Partner of the American Job Center Network

SPECIAL EDUCATION



KEDC Special Education is composed of a multi-disciplinary team of educators with expertise in the areas of special education procedures and issues, instructional strategies, literacy, positive behavior interventions and support, ABA, classroom management, assistive technology, UDL, complex needs, and secondary transition. KEDC Special Education provides support services and technical assistance as well as professional development to 21 school districts in Eastern Kentucky.

SUPPORT SERVICES

Especially now in this challenging time, special education support services are necessary and valuable. The Special Education team at KEDC has been busy developing online modules that school personnel can do virtually and at their own pace. We currently offer over 50 modules that feature google forms with embedded videos that incorporate electronic handouts and quizzes. Participants will gain beneficial knowledge in much needed areas such as behavior, eligibility and instructional strategies while earning professional development and EILA hours.

In addition to our online module website, we are offering a hybrid schedule of in-person and live zoom trainings including IEP, Progress Monitoring, ARC Chairperson, and Co-Teaching. The schedule of these trainings, as well as registration for them, can be found on the KEDC website under the Special Education tab. Not to be forgotten, our cadres are still very active on a blended schedule. New teacher cadres are meeting live via Zoom as well as our returning cadres of school psychologists, SLPs and MSD teachers. Math networks are gearing up to start for this school year along with a Self-Guided Structured Literacy Initiative.



Scan QR code for online modules or visit <http://spedonline.kedc.org>

OUTREACH PROGRAMS: KSB | KSD | KATC

Kentucky School for the Blind Outreach works in partnership with the educational cooperatives to facilitate expansion of regional services for students who are blind or visually impaired. Pamela Howard acts as a point of contact for services and programs offered by KSB for districts in the KEDC region. Pam is a Teacher of the Blind & Visually Impaired as well as an Assistive Technology Practitioner. She is also a former First Steps Vision Interventionist and has experience with VI from birth to age 18.

Kentucky School for the Deaf Outreach places experts across the commonwealth in collaboration with the educational cooperatives to provide technical assistance for students with hearing loss. Tina Spurlock works with students and families in the KEDC region. Tina is a Teacher for the Deaf and Hard of Hearing. She is beginning her 26th year in the field of Deaf and Hard of Hearing education.

Kentucky Autism Training Center serves as a statewide resource for individuals with autism spectrum disorder. Kimberly Howard provides direct training and technical assistance to education staff, community personnel and families in the KEDC region. Kim is a long time MSD teacher who has worked at all levels of education.



KEDC Special Education proudly partners with the Special Olympics in the Unified Sports Initiative. Unified Sports is dedicated to promoting social inclusion through shared sports training and competition experiences. Unified Sports joins people with and without intellectual disabilities on the same team. It was inspired by a simple principle: training together and playing together is a quick path to friendship and understanding. In Unified Sports, teams are made up of people of similar age and ability. That makes practices more fun and games more challenging and exciting for all. Having sport in common is just one more way that preconceptions and false ideas are swept away.



Stephanie Little, Director

Stephanie joined the KEDC Staff in July, 2012. She brings a repertoire as a Director of Special Education and Preschool with teaching experience in both the special and regular education setting. As Director, Stephanie provides support to the districts in special education mandates and procedural issues. She assists in legal research and monitoring activities. Stephanie ensures communication and coordination of the cooperative programs and services with district special education directors. She acts as a liaison between the districts and KDE and other agencies, conducts professional development, specific

KEDC SPECIAL ED DISTRICTS:

- ◆ Ashland Independent
- ◆ Augusta Independent
- ◆ Bath County
- ◆ Boyd County
- ◆ Carter County
- ◆ Elliott County
- ◆ Fairview Independent
- ◆ Fleming County
- ◆ Greenup County
- ◆ Johnson County
- ◆ Lawrence County
- ◆ Lewis County
- ◆ Martin County
- ◆ Mason County
- ◆ Menifee County
- ◆ Morgan County
- ◆ Paintsville Independent
- ◆ Raceland Independent
- ◆ Robertson County
- ◆ Rowan County
- ◆ Russell Independent

KEDC TECHNOLOGY SERVICES



MANAGED SERVICES*

- Managed Internal Broadband Services (E-Rate eligible)
- Phone Systems
- Facility Access Control
- Security Cameras
- Automated Student Account Provisioning

*These are new turnkey services offered at low recurring monthly costs.

SCHOOL SECURITY

- IP Security Cameras
- IP AiPHONE Video Access
- IP Access Control ID Cards, ID Badges, Key Fobs, etc.
- IP Network Based Intercom
- IP Sensor Vape Detection

NETWORK SOLUTIONS

- Automated provisioning of active directory/email accounts for students once enrolled in Infinite Campus
- Google Active Directory Sync for both Staff and Students
- Server Consolidation
- Daily/Weekly Network Administration, Engineering, or Consultation Services



TELECOMMUNICATION SOLUTIONS

- Telecommunication Cost Reduction Services
- VoIP and Traditional Phone System Installation
- SIP Trunking

Phone #: 606-928-0205

Fax #: 606-928-3785



WWW.KEDC.ORG/TECHNOLOGY



Jerry Prince

Director of
Technology Services

Phone: 606.929.2239
jerry.prince@kedc.org



Martin Stettner

Systems Engineer

Phone: 606.929.2222
martin.stettner@kedc.org



Charles Holbrook

Systems Engineer

Phone: 606.929.2226
charles.holbrook@kedc.org

CABLING DESIGN - KEDC can design cabling infrastructure that is compliant with KETS standards for your school renovation, addition, or new construction project. Services include on-site engineering with you and your architect.

CABLING INFRASTRUCTURE INSTALLATION - KEDC's wiring teams are Certified installers of AMP, Panduit, Belden & Corning brands. Our team can meet all of your data, voice, fiber optic, and IP based video needs.

FIBER OPTIC CABLING INSTALLATION - As a Corning LANscape extended warranty provider, we provide a fifteen year non-prorated warranty that guarantees the fiber we install will perform to the manufacturer's specifications. We can provide multi-mode or single-mode fiber optic installation and testing for 10, 40, and 100 gigabit connections. Whether you are looking to connect multiple closets in a building, different buildings on a campus, or several sites located miles apart, KEDC can help.

WIRELESS NETWORKING - KEDC can design, install, and configure wireless networks in Kentucky schools and buildings. Our systems engineers and wireless cable installers can collaborate with you to insure the correct number of wireless access points and proper placement of each one to provide complete coverage of you facilities.

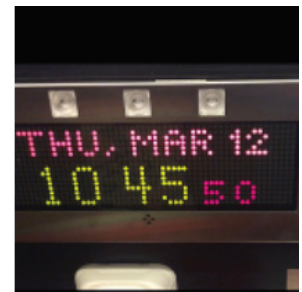
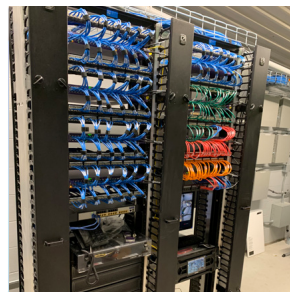
SYSTEM ENGINEER SERVICES - We can assist with ongoing network equipment maintenance, operating system upgrades utilizing your existing equipment, or assistance with special projects like networking hardware rollouts. Our Extreme/Avaya trained engineers and Microsoft Certified Systems Engineers can provide cost effective support for all your network needs.

AUDIO/VISUAL CLASSROOM COLLABORATION SOLUTIONS - KEDC can assist you with all your classroom audio-visual needs. For interactive flat-panel displays, large projectors, distance learning cameras, and sound amplification, KEDC has the expertise to design, install, and configure a system to meet your specifications.

KEDC E-RATE SERVICE PROVIDER - As an experienced E-Rate provider, KEDC can help you with a full array of internal connection and basic maintenance services.

LAN & WAN MONITOR COMPONENTS- The Systems Engineers at KEDC are experienced in the installation, configuration and troubleshooting of network electronics/wireless access point, wireless controller and network management access/analytics.

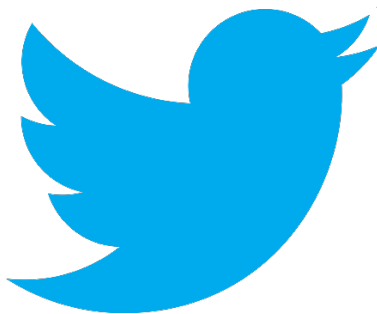
BASIC LAN & WAN MAINTENANCE - KEDC can help with wire identification and management, data racks, and uninterrupted power supplies (UPS) in both Local Area Networks (LAN) and Wide Area Networks (WAN).





KEDC MARKETING SERVICES

Our marketing team is here to help you learn more about why KEDC is Your Trusted Partner In Education including how members can take advantage of our large array of programs and services. Visit us at www.kedc.org and www.kpc4me.com Contact terri.white@kedc.org or carla.kersey@kedc.org



- Engage with KEDC on Facebook (kedc.org), Twitter (@Kedc1), YouTube, Instagram, and TikTok (@kedc_1)
- Talk with us at education conferences and events statewide.
- Participate with KEDC in district/community-wide initiatives.
 - Join us as we celebrate Kentucky Schools.



#YourTrustedPartnerInEducation
#AnInvestmentInYourCommunity





**KEDC Technology
is your trusted
partner in education,
innovation, student
safety, and more.**

Using KPC Contracts
our technology team can
serve schools all across
the state of Kentucky!

KEDC
Kentucky Educational Development Corporation

Jerry.Prince@kedc.org
904 Rose Rd. • Ashland, KY 41102
606.928.0205 • www.kedc.org

Put a pro in your corner with Pro•Team



Serving & Dining Room Makeovers

Even small changes can transform the dining experience and drive participation. We take your vision from concept to installation. Check out our website to see the latest transformations.

Fresh Eyes Reviews

Take your program from good to great and from great to amazing! Our customizable program identifies your strengths and opportunities. We build recommendations based on your unique set of assets and challenges.

Financial Evaluations

Pro•Team delivers the financial analysis, benchmarking and presentation tools foodservice leaders need and demand. Build a program of excellence with the metrics that matter.

School Menu Solutions

Developing healthy and cost-effective school menus takes time you don't have. Pro•Team can help build customized, fully compliant menus for your district and maintain them throughout the year by providing ongoing support. Our dietitians use USDA-certified software to analyze your menus, get your production records online, produce unique reports, and give you interactive, online menus.



Call us today.

Our Pro•Team experts stand ready to provide the feedback you need for the future you want.

WM. KRAMER & SON, INC.



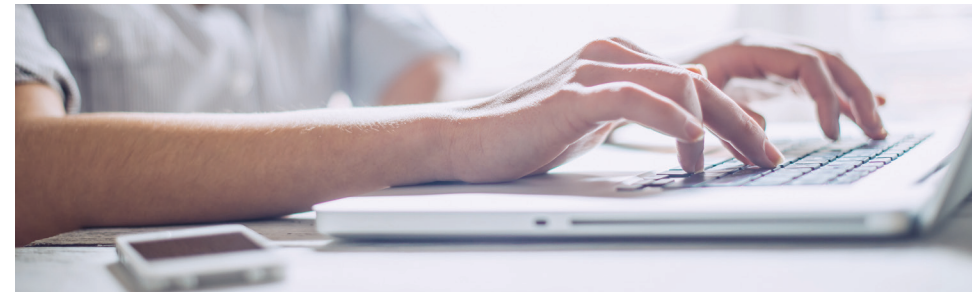
**Commercial Roofing
& Sheet Metal Contractor**
Since 1907

**Serving School
Districts**

Call On Us
513-353-1142
www.KramerRoofing.com


ACA-Track™

**REPORT WITH
CONFIDENCE**



**Let ACA-Track™ address the complexities
of ACA compliance for your clients.**

- Comprehensive 1094 and 1095 reporting
- Total data integration with any payroll system or HRIS
- Support for installation, implementation and training
- Ongoing technical support

800.488.7395
aca-track.com

Developed and
powered by



What kind of return on investment are you getting from your employee benefits package?

Partner with us to help educate and retain your people.

- ✓ Customized Benefits
- ✓ Employee Benefits Education
- ✓ Open Enrollment Administration

We believe that when employees understand their total compensation, they're less likely to move employers. American Fidelity delivers on-site benefits education and answers employee benefits questions year-round, so you don't have to.



Scan to find out how we can help!

americanfidelity.com/experience

KEDC
Kentucky Educational Development Corporation

AMERICAN FIDELITY 
a different opinion